

SentryView™

Graphical User Interface Software

SentryView™ Graphical User Interface, P/N 30025, is a Windows© based software program specially configured for interfacing the Sentry™ Visibility Sensor to the user's personal computer. SentryView™ polls the Sentry™ sensor, collects, displays, and archives the data on the PC. SentryView™ provides a graphical display interface, report generator, data analysis, & automatic archiving. Data that has been stored in SentryView™ can be downloaded and analyzed using common spreadsheet programs such as Microsoft Excel.

Features include:

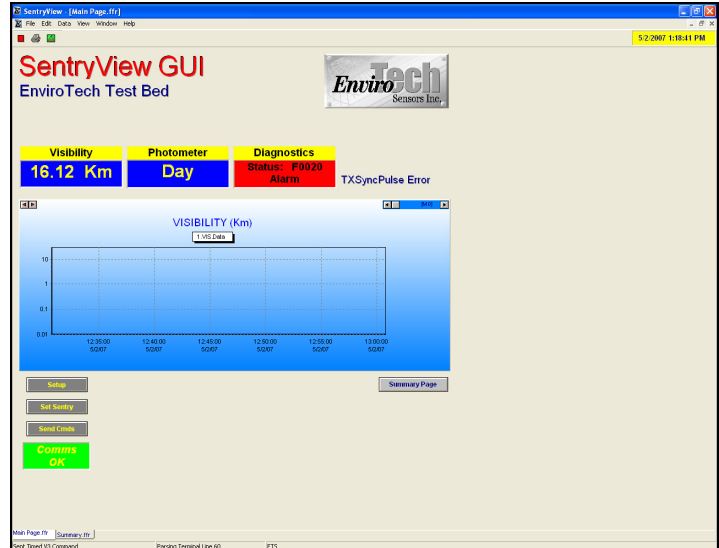
- *Real-time graphical software*
- *Powerful data presentation*
- *Supports real-time and stored archived data*
- *Built-in terminal program with direct connect to Sentry™ over serial interface*
- *Displays daily min/max, averages, graphs, alarms, sensor diagnostics in 2 windows*
- *HTML output for web browser viewing*
- *Can be customized for special applications*
- *Report generator for customized reporting*
- *Can be easily set up and customized with a little typing and a few clicks of the mouse*

System requirements:

- *Runs on Windows© 95, 98, Me, XP, NT, & 2000 (not currently configured to run with Vista)*
- *Requires a minimum of 32MB RAM*
- *For use with Sentry™ Visibility Sensor with RS-232 or RS-422 output, hardwired or wireless using RF Modems*

Ordering Information:

- *P/N 30025 SentryView™ Graphical User Interface Software*



P.O. Box 794
Clarksville, MD 21029
Phone: 410.531.8596 / Fax: 410.531.7010
www.envirotechsensors.com